

Office, R&D Space For Lease

RICHARD
FLAGEL REALTY
INC.
RETAIL • OFFICE
SALES • LEASING • MANAGEMENT

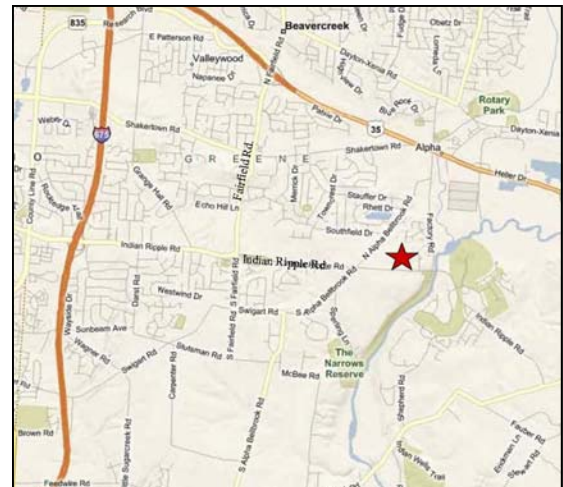


Elden Young
937-433-4123 ext. 208
937-433-4093 (Fax)
eyoung@flagelrealty.com
www.flagelrealty.com

Russ Research Center
Indian Ripple Rd.
Beavercreek, OH 45440

28 Acre Research Park

- **3,476sf - 19,000sf available**
- Campus like setting with research focus
- Multi-Purpose use:
 - Office, Research and Development
- Beavercreek Township -
 - No City Income Tax
- Ample parking & security lights
- Close proximity to Greene County-
Lewis Jackson Regional Airport

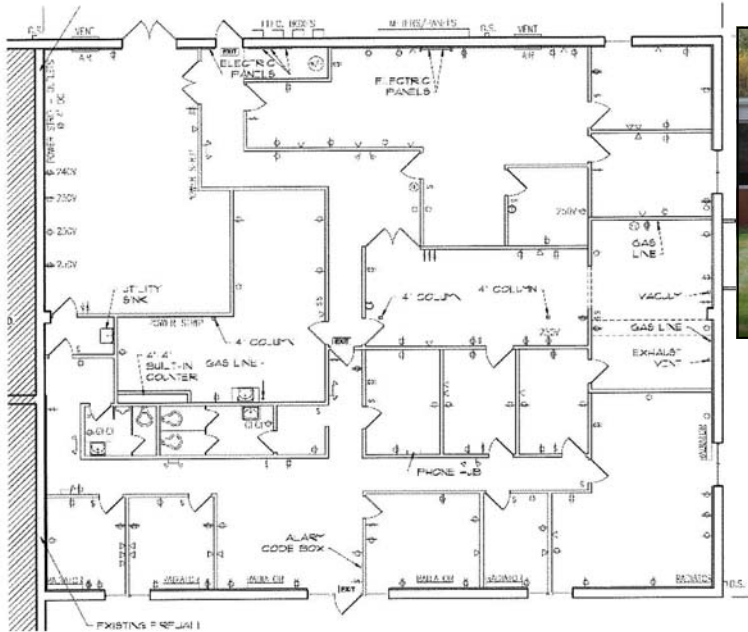


8120 Washington Village Drive, Dayton, Ohio 45458 • 937-433-4123 • 937-433-4093 Fax
"The information submitted herein is not guaranteed. Although obtained from reliable sources,
it is subject to errors, omissions, prior sale and withdrawal from the market without notice."



Building 12

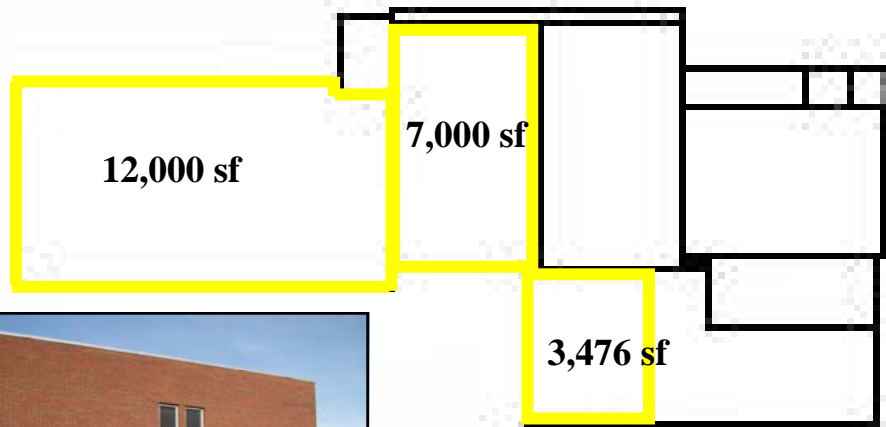
4,800sf Available



- Excellent laboratory space
- Tile flooring
- 220V - 240V Electric
- Men & Womens Restrooms
- Several private offices

Building 90

3,476sf - 19,000sf Available



Elden Young
937-433-4123, ext. 208
937-433-4093 (Fax)
eyoung@flagelrealty.com
www.flagelrealty.com

RICHARD
FLAGEL REALTY
INC.
RETAIL • OFFICE
SALES • LEASING • MANAGEMENT